

46TH

TOUR



OF DISTINCTIVE

HOMES

JUNE 1-12, 2024



PRESENTED BY BATH VOLUNTEERS FOR SERVICE



What is BVS?

Bath Volunteers for Service was established in 1958 when 13 members of the community came together to help better the lives of area children and adults through volunteer service.

In the past 10 years, the members of BVS have raised funds to provide \$188,964 in grants to local nonprofits, \$82,617 in community support funds, \$40,000 in scholarships to area students, and \$33,250 in merit awards given to students living in the Revere School District, totaling over \$344,000.

In addition to our Home Tour, we co-host the Bath Horse Show, now in its 80th year, and on the second Friday night in November we host Trivia and Tacos, an evening of fun where guests' knowledge is tested.

We are a very social and active group of women with a long history of service:

- initiating the planning of the Bath Community Park
- helping to maintain and improve the Bath Historic Town Hall
- helping to found the Fairlawn-Bath Branch Library
- conducting two American Red Cross blood drives annually
- various other community service projects and social outings each year

If you live in or around the Revere School District and want to join us in these community efforts, we would be delighted to welcome you. Please go to our website for more information.

www.bathvolunteersforservice.com



Welcome to the 46th Bath Volunteers for Service Tour of Distinctive Homes!

First, our deepest gratitude to the homeowners who agreed to prepare and share their unique and beautiful spaces with the Home Tour viewers. We understand the effort it takes to arrange a home to be its most alluring and then graciously open your doors to the BVS home finders, writers and videographers who document the tour. But most of all, we so appreciate your partnership with BVS and the whole reason behind this endeavor -- raising funds to make our community a better place to live!

BVS is an all-volunteer group of women who tackle their mission through service projects and fundraising for charities / non-profits that benefit families and children in Summit County. The largest source of that funding comes from the Home Tour proceeds and every penny, other than some meager administrative expenses, goes back into the community. So far in 2024, support for last year's Home Tour has helped BVS finance approximately \$40,000 in significant projects for 30 organizations, plus scholarships and merit awards for local high school graduates. For details, please consult our website: bathvolunteersforservice.com and our BVS Facebook page.

We welcome your interest in becoming an integral part of BVS! Despite the responsibilities involved in making Home Tour a success, or our other fundraising and community service projects, we are a relatively low-commitment organization. As they say, many hands make light work. In addition, BVS offers informative speakers at our monthly meetings, great social gatherings and chances to make friends with interesting people you might not otherwise encounter. Who would think that doing so much good for so many could be so much fun? Joining BVS is a total win-win proposition!

It takes lots of creativity, coordination and determination to put Home Tour together. It's both fascinating and inspiring working with many dozens of BVS members as they forge teams and master the hundreds of tasks necessary to bring a fabulous, professional production into being. It's so much more than a video. It's a full experience with recognition gatherings and an in-person component that benefits our community in countless ways. I would like to personally express my heartfelt thanks and admiration for our incredibly capable BVS members who have utilized their expertise, developed new skills and done the seemingly impossible to merge all these pieces into an enlightening, seamless and entertaining event.

We hope you delight in your Tour of Distinctive Homes experience. Thank you so very much for your support of BVS!

Sincerely,



Cathy Leuenberger
President 2023/2024,
Bath Volunteers for Service



Our Sponsors

DIAMOND LEVEL (\$2,500)

Nancy and George Blind
Miekeleen and Jim Hart
Tony and Susan Paparella
The Read Family
David and Charlotte Waddell

PLATINUM LEVEL (\$1,000)

Berkshire Hathaway/Stouffer Realty - Alison Baranek
Brad and Amy Bowers
Rosanne and Jim Burns
Commonwealth Properties, Inc.
Naomi D'Agostino and Greg Hartman
Laura Horning Duryea
Bill and Karen Feth
Susan Flowers
Tom Gober and Bob Zavodny
Brian Good and Victoria Vozar
Howard Hanna - Fairlawn Group
Mike Kahoe
Bob and Patti Kepley
Cathy and Steve Leuenberger
Tom Luck
Petitti Garden Centers
Suncrest Gardens
The Bath United Church of Christ
The Mandel Family Foundation
Jim and Cheryl Nilsen
In Honor and Memory of Kathleen Siddall

GOLD LEVEL (\$500)

Anonymous
David and Donna Axson
Clark Guillian Bertsch Wealth Management
Janet and Jeff Davis
Franklin and Associates
Gem and Clay Interiors
Hoff & Leigh Commercial Real Estate
Jones Group Interiors, Inc.
Keller Williams Chervenik - Laurie Morgan Schrank

Deb and Sam Laferty
Sherri and Russ Marchetta
Nan and Eric McClenaghan
Michael's Workshop
Dede Morrison
Saule and Marius Narbutaitis
Dianne and Herb Newman
Mike and Jackie Paparella
Kathy and Geoff Price
Kevin and Brenda Spear
Earl and Peg Stalter
Linda A. Van Fossen
Fred and Renee Zumpano

SILVER LEVEL (\$250)

Akron Metropolitan Housing Authority
Bath Homeowners Association
Concordia at Sumner
Susan and Bob Donahue
Downing Exhibits
Empaco Equipment Corporation
H. Everson Design and Build
Elaina and George Goodrich
Claudia Hower
Kaz Company Medical Plans - Sharon Honroth
Lori Macso
Meghan MacDonald State Farm Insurance Agency
James and Lisa McClellan
Dr. Michael and Susie Murphy
S.A. Comunale Co., Inc.
Sand Run Pharmacy
Steven W. Moore Building Corp.
Steve and Barb Strayer
Bridgette Thacker
Judith Thomas
Michelle Tognetti
Mark and Patricia Waickman
Becky Weihe

BRONZE LEVEL (\$100)

Anonymous
Bath Business Association
Bath Gamma Garden Club
Candace Boelter



BRONZE LEVEL (\$100) continued

Christopher and Vicki Boshkos
Bonnie and John Childs
Colonial Pharmacy
Deborah Cook
Countryside Florist, Inc.
Robyn and David Cutler
Echols Heating and Air Conditioning, Inc.
Terry and Mary Kay Finn
Ron and Anne Flowers
Marguerite and Mark Frey
Ruthie and Nick George
Jen Hardin

Meg Harris Stanton
Sue and Gordon Hartschuh
Anne Heckerman
Mary Ann Heed
i of the needle
Karen Karis
Shelley Kaye
Dan and Carolyn Kean
Rita Klein
Jan Lindstrom
Gretchen March
Ginger and Dan Marchetta
Karen McDonald

Judy Meek
Jill and Brian O'Hara
Ohio Hearing Health
Laura and Chip Preston
Nancy and Alvin Rockhill
Linda Shippy
Don and Kathy Sidaway
George and Alice Strickler
The H. E. Graves, Jr. Family Foundation
Steve and Elaine Verbeck
Williams Challenge M2M
Chris Yuhasz

Special Thanks

Our Homeowners

*Thank you for graciously opening your homes for this event.
Without you this Home Tour could not even be imagined.*

Our Media, Production, and Video Teams

Andrew Starr, *Videographer*

Sue Wilson, *Narrator*

Jody Miller Konstand, Sue Hartschuh, Lisa McClellan,

Saule Narbutaitis, Erin Haran, Elizabeth Resweber, *Scripts/Home Descriptions*

Bath Country Journal, Akron Beacon Journal/Gannet, West Side Leader, Revere Neighbors, *Publishing*

Rubber City Radio Group, *Media*

TRIAD, *Website Support*

Novex Systems LLC / Polly Wheeler, *Promotional Materials, Tour Book*

Our Florists, who generously provided beautiful floral arrangements for each home

leaf

Wright by the River

leaf

Historic Roy Firestone Revenant

Countryside Florist

Lakeside at Lucky Point

Countryside Florist

A 'Bonne' Legacy

Savoir-Faire

Rustic Hammonds

Reilly's Originals

Stately Georgian Revival

Savoir- Faire

Meadow House (Sponsor Appreciation Party)

Our BVS Home Tour Committee Chairs, Co-chairs, and the entire hard-working Committee

This tour would not succeed without your dedication of time and talent.

BVS is a 501(c)(3) non-profit organization and your sponsorship is tax deductible. We appreciate every donation. Please note that a publishing deadline may have prevented us from acknowledging you.



Funds raised by Bath Volunteers for Service provide grants to non-profit groups, scholarships and merit awards to Revere area students, and other community support. Some of our grant recipients have shared stories with us to let us know how their organizations have benefited.

Akron Children’s Museum

The mission of Akron Children’s Museum’s is to be a gathering place for children and families where play inspires exploration, discovery learning and problem solving. ACM envisions a community shaped by lifelong learners, who provide innovative leadership inspired by creativity and diverse perspectives. The Museum is passionate about educating children. Because ACM is located in the center of Akron, exposure to all sorts of experiences that our children may not otherwise encounter is paramount. The allocation from BVS is designed to partially fund a gate and electronic photo finish timer for the museum’s STEM Car Challenge exhibit. The car exhibit is presently designed for a target audience of 6-10 year olds. The new electric timer system, in conjunction with STEM challenges, will allow children to design their own car to increase speed.



Bath Park Board – Fall Into Nature



Bath Park Board works as a volunteer liaison group in an advisory capacity with Bath Township Trustees for the betterment and preservation of Bath Township's five parks. The board members deliver support services and activities not provided by tax dollars. Several educational activities and events are park board sponsored each year to create awareness of and to encourage the use of the township parks. On the second Saturday in October, they sponsor their annual Fall into Nature celebration in the Bath Nature Preserve where families are invited to enjoy the park's beauty, learn about regional floral and fauna, and enjoy activities offered by local community organizations and non-profits. Each participating child may select one pumpkin from the Bath Volunteers for Service sponsored pumpkin patch, paint the pumpkin, and take it home to enjoy. This event has been a huge success and continues to grow every year, attracting more and more families to enjoy the outdoors and inspire their curiosity about nature and the environment.

Music at Bath Concert Series

The "Music at Bath Concert Series" seeks to present accessible, creative and high-quality music programs that will inform, inspire and enrich the lives of the diverse communities in Northeast Ohio. 2024 is the inaugural year for the Concert Series, featuring 8 concerts with a variety of performances throughout the spring. A program of summer lawn concerts will be offered in June and July, followed by a series of concerts in the fall. These concerts are free to the public; however, free will offerings and sponsorships are very welcome! The BVS award will help fund music ensembles, printed programs, promotion and equipment rental.



The Salvation Army (Summit County) – PreK Classroom



The Salvation Army is Love Beyond Devastation. Assessing the needs of each community in which they serve, The Salvation Army strives to understand obstacles, hardships, and challenges presented to an area's specific population, building programs designed to offer immediate relief, short term care, and long-term growth to best benefit the residents. These areas include food security, literacy, academic and career success, hot showers for the un-housed, and prevention of homelessness with utility, rent, and mortgage assistance.

Purposeful play is active, focused play that strengthens a child's developmental growth. In their preschool, where as many as 24 students at a time receive a 4-star Ohio rated education, The Salvation Army employs purposeful play in preparing the students for kindergarten and future academic success. A grant from BVS was used to purchase much needed new, replacement items for the playroom including two child-sized settees for reading and listening while being read to,

a new kitchen playset with stove, refrigerator, sink and cupboard, and accessories. Salvation Army representatives tell us a cheer went up in the building when news of the grant award was received.

Students With A Goal (SWAG)

SWAG's mission is to create a mentoring home that cultivates students' God-given potential for learning, leadership, life and loving relationships. SWAG works to break the cycle of poverty by providing education and lessons in leadership skills and goal setting for our youth. The program is part of the city of Akron's plan to prevent youth violence. It also works on racial harmony and creating bridges across the different school clusters of Akron Public Schools. The program offers after-school recreation, academic assessment and tutoring, a family meal, and a leadership / career guidance / inspirational session for 6th-12th graders. It takes place Monday through Thursday at Summit Lake Community Center and REACH, providing transportation to the students from school and then home at the end of program.

SWAG sought funding from BVS for a college tour for high school students. The students are encouraged to set individual goals and are introduced to the possibility and requirements of attending college soon after joining SWAG. Many of the students have never considered college as a viable option in their lives; seeing is believing. The college visit program is not intended necessarily to help them select a school, but more to set college as a long-term goal early in their high school/middle school career. They are also exposed to ways to earn scholarship and financial support and the importance of their grades to reach their potential.



United Disability Services – Low Vision Clinic

UDS' mission is to provide and support inclusive, life-enriching options through person-centered programs and advocacy. Senior citizens make up one of the largest segments of patients served at UDS' Low Vision Clinic. These patients are seeking ways to maximize their remaining vision so that they can continue to manage the functions of daily living, maintain independence, and enjoy a good quality of life. These patients express concerns about losing the ability to read, write, manage their personal care, and safely move about their home. One of the most effective tools to help our senior patients overcome these barriers is the use of a variety of vision aids.



"I can now read my mail and medications."

Many of the elderly patients UDS serves cannot afford to purchase beneficial adaptive aids such as high-power magnifiers. For many years, the generosity of Bath Volunteers for Services has made it possible to provide magnifiers to low-income senior citizens with significant visual deficiencies. Past participants have universally reported improvement in their ability to perform many tasks they could not previously do because of their lost vision. They have expressed tremendous gratitude for this special service that has provided greater independence and a much improved quality of life.

2024 grant or community service recipients:

Organizations & Charities Serving Summit County

ACCESS Shelter & Housing
Akron Children's Museum
ArtSparks
Battered Women's Shelter
Bethel Lutheran Church - Donation Garden
CASA Board Volunteer Association
Cast it Forward
Crown Point Ecology Center
First Glance Student Center, Inc
Julie Billiard School - Akron
Music at Bath Concert Series
Rape Crisis Center
Stewart's Caring Place
Students With A Goal (SWAG)
The Salvation Army, Summit County

The Well Community Development Corporation
United Disability Services, Inc.
Victim Assistance Program Inc.
Victory Gallop, Inc.
Williams Challenge - M2M Fatherhood Initiative

Serving Bath & Richfield Communities

Bath Gamma Garden Club
Bath Park Board
BVS Merit Awards & Scholarship Grant
Revere Local Schools:
 Bath Elementary School
 Revere CARE
 Revere High School Active Minds and
 School Counseling Department
Richfield Fraternal Order of Police
Richfield Historical Society

Franklin & Associates

Design, Build, Remodel & Renovate
Structures & Interiors

Restored Primary & Fireplace
Creating A Grand Suite With an Added
Dressing Room & Bath



Franklin & Associates Design Build, is excited to announce that, once again, we will be featuring another unique historic renovation on *HGTV's Magnolia Network*.

"Restoration Road", with *Clint Harp*, on *Discovery+*, has been following our historical restoration in Akron, Ohio. Starting **May 20th**, view the episode on Discovery Channel (Cable TV) and stream it anytime on Discovery Plus.

Clint and his Crew followed this magnificent treasure, built in 1884, by Edwin H. Merrill, who was a pioneer in Akron's clay products industry and more. This spectacular home is located in what was the wealthiest residential district in Akron at the time.

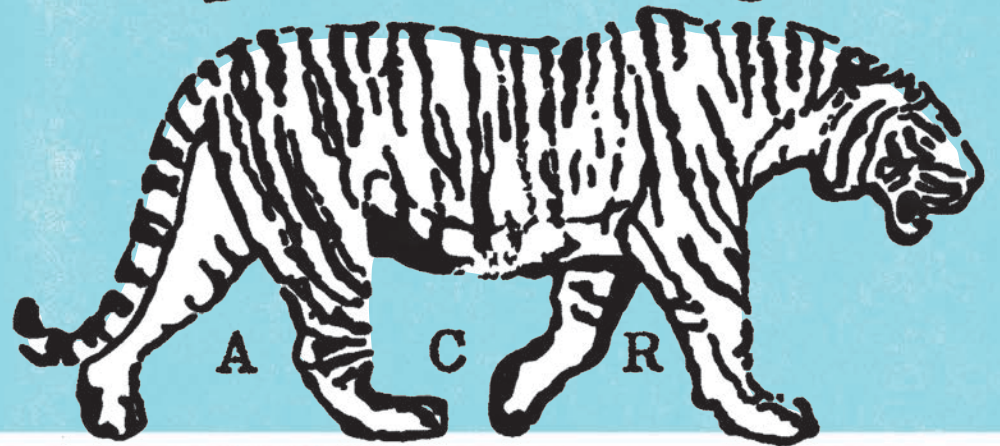
View this historical treasure and all our other unique projects and learn more about all our Design & Build capabilities at:

Website: www.FranklinandAssociates.com

Houzz: [Franklin & Associates Design Build](#)

330.665.9097 HBA, NAHB, NARI

AKRON COFFEE ROASTERS



Get beans, coffee drinks and toast at

30 N High, downtown Akron.



Subscription & wholesale info at

<http://akron.coffee>



Insight Financial Associates

www.InsightFinancialAssociates.com



Naomi R. D'Agostino CLU[®], ChFC[®]
Financial Adviser[★]

Naomi@InsightFinancialAssociates.com

O: 216-520-7829 C: 216-408-8585

6100 Oak Tree Blvd., Suite 300 • Independence, OH 44131

Financial Adviser for Eagle Strategies LLC. Eagle Strategies LLC is a New York Life Company.
Insight Financial Associates is not owned or operated by
New York Life Insurance Company/Eagle Strategies LLC/NYLIFE Securities or its affiliates.



As Bath Community Fund celebrates our 10th anniversary in 2024, we want to thank our donors, whose generosity has allowed us to achieve...



More than \$1.25 million in endowment assets, through the collective giving power of 350-plus donors.

Together, we've given more than \$250,000 in grants to 29 nonprofits serving Bath Township.



Since 2014, our mission has focused on preserving the history, beauty and legacy of Bath Township. Your support is critical to making our community a stronger, healthier and more vibrant place to live.

This ad is dedicated to the memory of Kathy Siddall, a generous supporter of Bath Community Fund and a valued member of the Bath community.

BathCommunityFund.org



Gem & Clay
INTERIORS

FULL-SERVICE
Interior Design to
Inspire, Nurture & Serve

**NEW CONSTRUCTION
REMODELS
FURNISHING & STYLING**

www.gemandclay.com

S.A.
COMUNALE



1973-2023

Providing industry-leading, end-to-end fire protection, mechanical, and HVAC services









**H. Everson
DESIGN
& BUILD**
CUSTOM INTERIOR &
EXTERIOR DESIGN SERVICES



INTERIOR DESIGN FIRM AND SHOWROOM

Browse our inventory of exquisite, hand selected, designer items at our interior design showroom. Shop in-person and online!

-  330-836-9900
-  hello@heversondesigns.com
-  heversondesigns.com
-  [@h.everson_designs](https://www.instagram.com/h.everson_designs)
-  3900 Medina Rd Suite U
Akron, OH 44333



**DISCOVER
BEAUTY FOR
YOUR HOME**



COMMONWEALTH PROPERTIES, INC

**Homes For Rent ~ Option To Buy
Office/Retail Space For Lease**

330-666-7773

View Properties Online

www.cwproperties.com



MARIUS NARBUTAITIS

METAL ARTIST | 330.352.0088



 FIND ME ON FACEBOOK!



**After
Touring
Distinctive
Homes...**

BUSINESS LEADERS!

*You're Invited to Become a
LEAF Business Club Member!*



*For floral design and delivery discounts, employee privileges
and other details, call 330.867.6699,
email lisa@leafhomeandblossoms.com or visit our website
leafhomeandblossoms.com*

*For you, your team and your customers,
we can't wait to brighten your space all year!*



Genuine Precision LLC

A Flooring and Remodeling Company

- Tile Floors
- Tile Backsplashes
- Luxury Vinyl Tile Installation
- Bathroom Remodels
- Laminates
- Hardwoods
- Demo and Disposal
- Floor Leveling



Geoff Price
330-472-6372 Call or Text
genuineprecision@gmail.com

*Tired of your kitchen backsplash?
Are your floors ready for a new surface?
Owner on site for all jobs!!*

**WELLS
FARGO**

Advisors
Financial Network

Clark Guilliam Bertsch
Wealth Management

proudly supports

The BVS 46th Tour of
Distinctive Homes

Clark Guilliam Bertsch Wealth Management

875 N. Cleveland Massillon Road

Akron, Ohio 44333

Direct: (330) 932-4112

Thomas.Clark@CGBWealthManagement.com

www.CGBWealthManagement.com

Investment products and services are offered through Wells Fargo Advisors Financial Network, LLC (WFAFN), Member SIPC. Clark Guilliam Bertsch Wealth Management is a separate entity from WFAFN. ©2022 Wells Fargo Advisors Financial Network, LLC.



Tour
Our Store!

 **Lucky Shoes**
Lucky. For You.

www.luckyshoes.com

Wright by the River

A long, winding drive leads to this magnificent home nestled on fourteen mostly wooded acres. This is a home in harmony with nature built adjacent to the Hinckley Reservation, with the west bank of the Rocky River meandering through the property.

Designed and built 14 years ago by the interior-designer homeowner and her husband, this home is Frank Lloyd Wright-inspired, combining Wright's Prairie-style architectural designs with elements from his iconic Falling Water home in Pennsylvania.

Ochre-tinted stucco, stacked stone, and Cherokee red window frames replicate the Falling Water design. The home's entrance is a wider-than-usual front patio, complete with artistic planters and a welcoming bistro table and chairs. Once inside, the square-shaped foyer welcomes with a delightful mix of unique cabinets, eclectic decor, and colorful glasswork, curated by the homeowner. The Brazilian walnut floors and cherry trim start here and flow throughout the home, emphasizing the "organic and natural," a theme both within and outside the home.



Distinctive tall windows enhance the open feel in the office. Natural light, combined with the custom cherry cabinetry designed by the homeowner, encourages a space for creativity where projects come to life. The ceiling, with its interesting cherry framing and Frank Lloyd Wright-inspired ceiling fan, adds another design detail to this workspace.



Abstract designs in the softly-hued contemporary rug set the stage for the formal dining area. The stacked stone wall, replicated from the home's exterior and recreated throughout the home, frames two Spanish upholstered side chairs named after the great bullfighter, Manolete. The one-arm design portrays the matador's Muleta, the fabric on the fighter's arm, while the top of the chair denotes his hat, the Montera. The metal in both the chandelier and the lamp on the buffet brings an additional natural element to the room's preponderance of wood and stone, all softened by a plethora of plants.

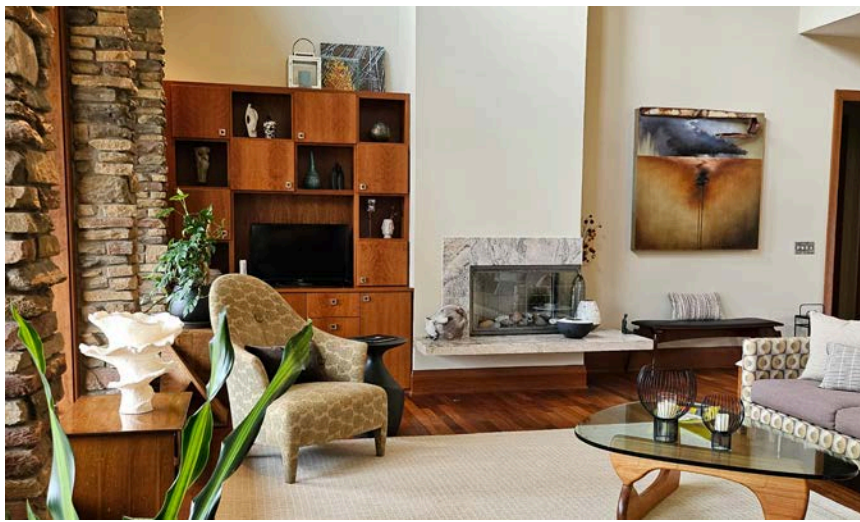
The stunning framed tapestries on the wall, purchased while traveling, are vintage Burmese kalagas. Three-dimensional figures are applied onto background fabric. Then the magic begins as intricately hand woven designs are enhanced by gold threads and embellished with pearls circling the borders of the tapestries.

Six photographs of a Dale Chihuly exhibit, taken by the homeowner, herald access to the owners' suite - its wall of windows and 14-foot-high ceilings creating an open, spacious ambiance. The room overlooks the swimming pool and outdoor amenities, accessible by the door to an enticing covered porch. The custom wooden furniture – a modern patterned headboard designed by the homeowner, the leather-front high chest, the jewelry chest, the convex-paneled armoire, and the Shaker-style nightstands – all lend a calming, distinctive feel to the room.

The adjoining bath is another study in wood, where patterned cherry doors add utility and artistic craftsmanship to this spa-like space. Infused frosted glass windows offer privacy above a freestanding soaking tub.

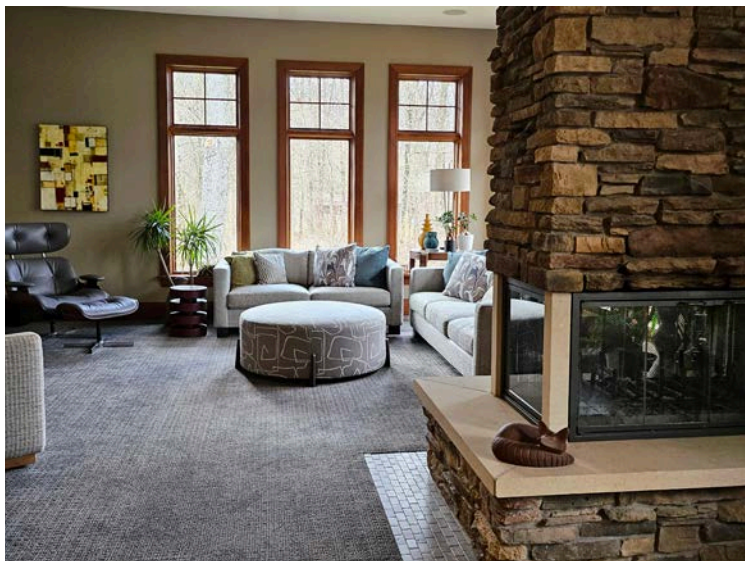


The Great Room boasts 20-foot-high ceilings and a double-deck span of windows overlooking the covered patio and outdoor spaces. With minimal framing and no coverings, the windows showcase the outside stone columns, which mirror those inside. The furniture is Mid-Century Modern, with geometric forms blended into frame and fabric and juxtaposed with organic shapes throughout. The designer homeowner is an avid collector of modern pieces, such as the Noguchi table by Herman Miller, the Le Corbusier chair, and the ghost/



the granite island and elevated counters provide bar seating in addition to the custom walnut table built by a local furniture maker. The sculptural “nut” pendant above the table was hand-crafted in Spain and echoes the organic designs prevalent in this home.

Around the corner of the three-sided, stacked-stone fireplace is the cozy family room, where a vintage Eames chair and ottoman reflect the room’s ambiance and natural inspiration. Beyond the creative metal and stone wall sconces, the windows offer a



panoramic view of the back yard, complete with fire pit and Adirondack chairs.

Three complementary chandeliers, looking like delicate paper, float above the stairway to the home’s lower level. The familiar geometric pattern is reprised on the staircase railing that leads below the George Nelson pendant lights to a large gathering space, complete with a full bar. Photographs taken by the homeowner’s daughter of Alaskan and German markets are on view throughout. A custom theater room is used for eclectic viewings from feature films to sporting events, but



it’s the Game Room that sees the most action. Slot machines, darts, pool, ping-pong, air hockey, tabletop shuffleboard, even a golf simulator in an adjacent room are available for the game enthusiast. The fireplace, with its diverse mix of patterns, lines and shapes, fittingly embodies the home’s designs and natural details. Nearby, a sunny corner provides space for for the homeowner’s extensive plant collection in the winter.

On the other side of the kitchen is an expansive back hallway with half bath, storage space, laundry room, and a Phyllis Seltzer original titled “Variation 6,” purchased at the artist’s estate sale.

A one-of-a-kind, homeowner-designed railing leading to the upper level reflects the geometric patterns found throughout the home. Those same patterns accent the hallway on this level with its three bedrooms, including an inviting guest room at the top of the stairs with an ensuite bath and unique wooden sculpture. But it’s the owner’s studio at the end of the hall that entices. Fabrics, yarns and tools of the homeowner’s work are organized around the worktable that dominates the room. Eleven Wright-inspired



clerestory windows on three of the four walls allow natural light to flood this creative space.

Sliding doors open to a fire pit enhanced by a Zen Garden and meticulous landscaping. Barn stone, excavated from original foundations on site, was repurposed for the hardscape. The pool and decking, the covered patio/porch and dining area, and the homeowner’s artistic and green thumb prowess complete the serenity and beauty of this home – indoors and out.

At any day’s end, Wright by the River is where you’d want to be.

Flowers for this home provided by leaf



you're invited

TO JOIN LEAF'S NEW FLOWER CLUB

SEASONS of leaf.

For discounts and details call 330.867.6699
or visit leafhomeandblooms.com

We can't wait to brighten your days all year!

Available for purchase for you or as a gift!

Empaco

Equipment Corporation

2958 Brecksville Road, Box 535 • Richfield OH 44286

Phone (330) 659-9393 • www.empacoequipment.com

Monday – Friday 7am- 5pm • Saturday 8am- 12pm (Seasonal)

YOUR CENTER FOR PATIO AND BULK MATERIALS

UNILOCK
DESIGNED TO CONNECT



PAVERS • WALL UNITS

LYBIND SANDS • SNAP EDGE • ADHESIVES



• NATURAL STONE • GRAVEL
SAND • LIMESTONE •

RESIDENTIAL & COMMERCIAL

PICK-UP OR DELIVERY AVAILABLE



THANK YOU

Bath Volunteers for Service

for highlighting

the beauty of Bath Township.

Congratulations on your

46th Tour of Distinctive Homes!

Bath Homeowners' Association

Join us to "Keep Bath Beautiful!"



gracylane
First & Main

Gift & Accessories
Boutique

Brighton® Vera Bradley



CONSUELA

e|newton



330-650-0370



<https://www.facebook.com/GracylaneHudson/>



41 Village Way, Hudson, OH



zavodny | dental

**Creating a
healthy smile,
one visit at a time!**



330-836-9511



2950 West Market St, Suite N-O Fairlawn, OH

Historic Roy Firestone Revenant

With a castle-like appearance – turret included – this Roy Firestone-designed house built in 1928 is a standout in a neighborhood of classic homes. After decades of alterations and neglect, a few fires and even floods, this majestic French Tudor Revival is a true revenant, lovingly brought back to life, inside and out. A five-year total renovation, enhanced with other additions, has created a masterpiece with original intentions preserved and elegant luxuries added.

The brick and timbered stucco exterior invites entry through a front door with the original leaded-glass, diamond-shaped window with a Tudor rose. An anteroom with a charming pug doorstop precedes the foyer where the chandelier's rippled glass shades cause the wallpapered ceiling to look like stretched fabric. The intricate pattern in the custom-designed, oak parquet floors throughout and



the Tudor-style arched doorways make this home as distinctive as it is elegant.

The living room's conversation area is under the watchful eyes of antique wooden property markers

from the Philippines, meant to keep out evil spirits. An armoire displays treasures from world travels, while the hand-crafted Hubbardton Forge chandelier and matching sconces light up the custom mantel. The refurbished fireplace with sandstone surround and the Tudor arch opening to the firebox are accented by antique dog figures, found in Chicago and inlaid into the wood of the mantel. Above the mantel, a colorful painting by Alexandra Nechita, a Romanian-American artist known as the "Petite Picasso," is a treasured possession. At the far end of the room, the



five blue birds framing the window once perched together until cleverly separated into complementary pieces of art!

Dark blue and soft green hues set the tone in the renovated and enlarged dining room and kitchen. The Amish-made, asymmetrical hickory table and a stunning Tord Boontje-designed Swarovski crystal Blossom Chandelier dominate the dining area. A collection of crosses from European travels highlights one wall while a metallic-finished, wood buffet is center stage on another, showcasing eclectic symmetry with its whimsical mushrooms, unique lighting and local artwork. Two corner cabinets from the original breakfast nook are now built-in storage adjacent to the room's window.



Chandelier-style pendants light the custom island, which provides a front-row seat to the new chef's kitchen. A walnut cutting board with a bucket built into the matte-finish Cambria quartz countertop is a visual complement to the rough-hewn beams overhead. Cabinets painted a customized Farrow & Ball grey-brown, frame the hood over a six-burner Wolf range with a pot-filler faucet. Other luxury features include the double oven – one convection, one steam – and the restaurant-grade refrigerator. Windows, enhanced by custom tile work resembling bamboo, light the corner sink area.



A butler's pantry, with the same tile work and cabinets as the kitchen, provides extra workspace and storage, as does the handy laundry room. The tile is reminiscent of an old, stone castle floor, and the mudroom area has custom locker-style storage and a gallery of treasured ceramic tiles from world travels.



The upstairs landing doubles as a cozy reading nook with a light matching one in the entry, and a stained-glass window insert created by the owner's cousin. A guest room in soothing neutrals and a full bath with stunning tile work and a distinctive mirror are accessed from the landing, as is the second guest room. The second guest room is one step down – an architectural feature typical of Roy Firestone-designed homes, which were built when servant's quarters were not on the same floor level as rooms for the family. This gabled room was elongated with the addition of the garage below, providing an at-home workspace with a thrifted mission-style oak desk and the convenience of a renovated, ensuite bath.

An Amish-built walnut desk, designed and built to the owner's needs, takes center stage in the home office where a world map commands one wall, with travels pinpointed. Other trips are recalled by the glass copper tiles from Prague and a painting by L. Roth of the couple's favorite city of Bruges, Belgium. The roof patio – accessible from here and made possible when the room below was added – has become a favored overlook to the backyard and pool. Tudor beams and stucco accents match the home's exterior features while a Don Dumm sun smiles down on the space that beckons with an "above-the-fray" ambiance.



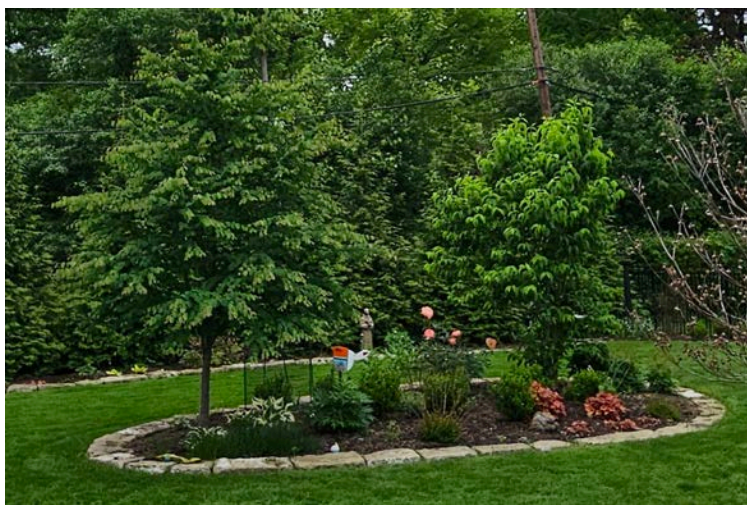
Soft gray hues, metallic accents, and artworks showcasing the city of Bruges make the owners' suite a sanctuary of serenity. The raised ceiling and decorative beams were added during the renovation, and the metallic wallpaper above accents the beauty of another Swarovski chandelier. The original firebox was redesigned to replicate the arabesque-style door panels of the salvaged dining room cabinets. The ensuite bath features hammered nickel sinks, a soaking tub, and a stylish shower door that opens to exquisite tile work. A walk-through, room-sized closet completes this one-of-a-kind suite.



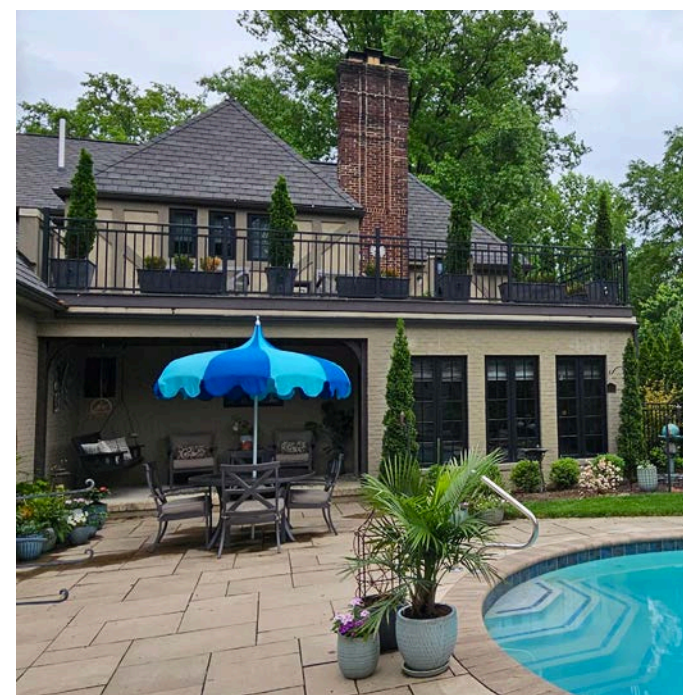
The vanity in the main level powder room is striking, with its base of wormy chestnut and metal topped with a petrified wood sink.

Next door is a cozy room with the only original, coffered ceiling remaining in the home. It's a room destined to become a Speakeasy.

An enticing family room addition provides space to relax and unwind, or escape to the outdoor oasis where a covered sitting area overlooks the patio with a soothing fountain and a stunning Don Drumm original. The pool area features a covered pergola, seating space, and a matching storage shed. New landscaping in the backyard features appealing garden islands where artworks abound and arborvitae borders corral the couples' beloved, rescued Shiba Inu dogs.



This lovingly renovated and re-imagined home is as much an homage to the past – and the talents of its architect – as it is an acknowledgment of the current owners' timeless vision, sophisticated elegance, and faithful dedication to restoring and renewing this Historic Roy Firestone Revenant.



Flowers for this home provided by leaf



Countryside Florist, Inc.
Making Everyday a Celebration

4553 Broadview Rd • Richfield OH 44286
 330.659.3776 • flowers.countryside@gmail.com
www.countrysideofrichfield.com



MUSIC AT BATH
 CONCERT SERIES

**Congratulations to
 Bath Volunteers for Service
 on the 46th Tour of
 Distinctive Homes!**





www.musicatbath.org
 The Bath Church • 330-666-3520



ZUMPANO
 DESIGN & CONSTRUCTION

330-607-5700 fred@zumpanodesign.com

- *Landscape / Water Features*
- *Garden Structures / Pergolas*
- *Patios / Decks / Walls*
- *Lighting / Irrigation*

CONTACT US FOR ALL YOUR OUTDOOR PROJECTS.



Adding Value to Your Home and Your Life

SuncrestGardens.com • 330.650.4969 
5157 Akron-Cleveland Road • Peninsula, Ohio 

Lakeside at Lucky Point

The memories and legacy of four generations of family in this lake community helped imagine this spectacular home. After a lifetime of ideas, months to design and two years to build, this home sports the sleek lines and elegant structure of a ship about to set sail. Five levels, four bedrooms, an adjacent apartment, wrap-around decks, a boathouse, and incomparable views are now part of the new family memories being created at Lakeside at Lucky Point.

The elevated porch and double front doors with oversized glass panels open to an airy, spacious foyer. Vaulted ceilings enhance the inviting feel in a space where angles create architectural interest. The nautical theme welcomes, and family photographs paying homage to past and present generations add that personal touch. The elevator, steps to the lower level, and an office with lake views are on one side of the foyer. The other side reveals an elegant powder room and the heart of the home – the great room and kitchen/dining area – where floor-to-ceiling windows and doors bathe the space in light and water views.

Ten-foot-high ceilings throughout the main floor add grandeur and sophistication to the space. In the meticulously planned and executed kitchen, white Shaker-style cabinetry is accented by the muted tile backsplash, except behind the six-burner stove, where navy blue tile in an updated herringbone pattern pops! Granite countertops, in complementary colors and patterns, add visual interest and depth to the room, as does the angled island with crystal globe lighting overhead. Tucked behind the stove, a room-sized butler's pantry offers additional workspace and out-of-the-way storage. While many kitchen sinks are designed beneath a window, this deep basin sink fronts a uniquely designed window – it folds up and opens to the summer kitchen, blurring the boundaries between the spaces!



The summer kitchen is a seamless transition from indoor comfort to outdoor serenity. Its rustic charm is evident in the cedar walls, vaulted ceiling, and stacked stone wall behind the stainless-steel grill. Expansive windows not only overlook the lake but open accordion-style when weather permits, while the mounted bar beneath encourages a chance to linger!

The sprawling, multi-level decks, accessible from several rooms in this home, provide breathtaking lake views. The angles and shape of the upper deck extend from the house and evoke the feel of a ship setting sail. The railings were designed for unobstructed lake views while the expansive decking affords seating and conversation spaces galore! The sunrise porch, adjacent to the owner's suite at one end of the upper deck, boasts a hot tub with its retractable, automatic cover. The center section of the deck overlooks the lower deck and an inground pool, with the firepit and flagpole another level below. Just beyond is the triangle shape of land jutting into the lake from which the site takes its name – Lucky Point!

Adjacent sliding glass doors – at 90-degree angles to each other – separate the deck from the great room and offer another seamless flow



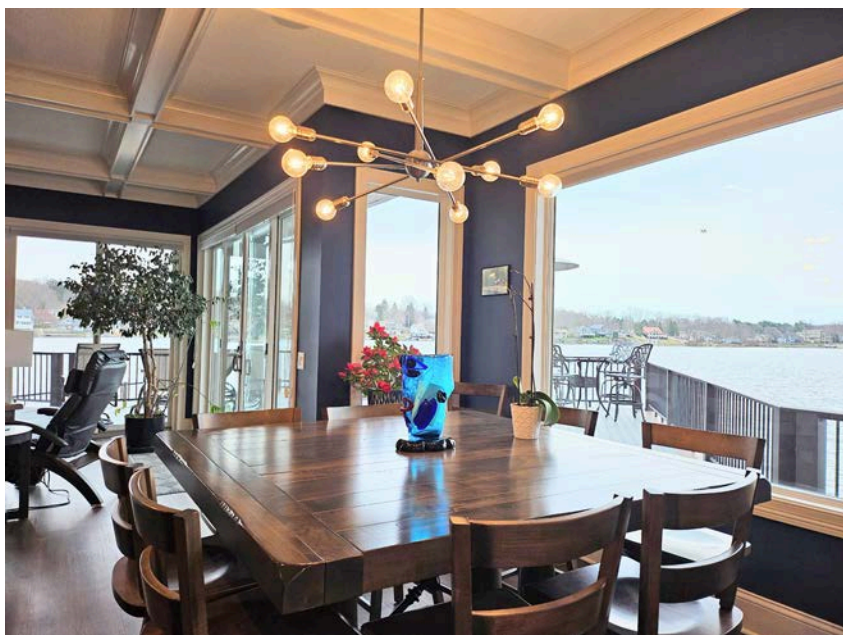
The summer kitchen is a seamless transition from indoor comfort to outdoor serenity. Its rustic charm is evident in the cedar walls, vaulted ceiling, and stacked stone wall behind the stainless-steel grill. Expansive windows not only overlook the lake but open accordion-style when weather permits, while the mounted bar beneath encourages a chance to linger!

The sprawling, multi-level decks, accessible from several rooms in this home, provide breathtaking lake views. The angles and shape of the upper deck extend from the house and evoke the feel of a ship setting sail. The railings were designed for unobstructed lake views while the expansive decking affords seating and conversation spaces galore! The sunrise porch, adjacent to the owner's suite at one end of the upper deck, boasts a hot tub with its retractable, automatic cover. The center section of the deck overlooks the lower deck and an inground pool, with the firepit and flagpole another level below. Just beyond is the triangle shape of land jutting into the lake from which the site takes its name – Lucky Point!



between indoor and outdoor spaces. The coffered ceiling, navy blue walls and stark white trim make the room as distinctive as it is inviting. A custom Amish-built dining table, which opens to seat 14, anchors one side of the room. Its centerpiece is a unique Murano vase, resting beneath the angular chandelier that adds elegance without obstructing the lake views. Across the room, an antique table from the homeowner's grandmother adds a touch of sentimental charm and opens to offer additional seating for eight. Sculptures on the console table, including a striking Don Drumm pelican, a mirrored bar accented by blue glassware, and a vibrant 1930s painting from Brazil offer touches of artistry and color in this tranquil setting.

The delicate artistry of a graceful butterfly and a tree of life herald access to the owner's suite, where the bedroom poses an interesting contrast.



The muted greys of the custom headboard, with its tufted fabric insert, are enhanced by the small pewter treasures displayed on it. Nautical pieces are juxtaposed with the vibrant colors and delightful design elements in the room. Two walls of windows framing the picturesque water views dominate, but the whimsical, multi-colored turtle from Tucson, and the windowed cabinet displaying eye-catching shoes, draw one's attention. The delicate tea set on the cabinet's top was a treasured possession of the homeowner's mother.

Fish of varying shapes and sizes float through the primary bathroom. Granite countertops add elegance to the space while textured and heated luxury vinyl flooring adds comfort. The spa-like experience continues with the freestanding soaker tub and the walk-in shower with seven showerheads equipped with customizable water pressure and temperature, hidden behind the windowed wall!

A second, lower front entrance to the home opens to an area with high ceilings and driftwood-like patterned flooring. Charming and colorful decor adorns the space, including a large gecko and a bright, wooden frog statue adding a playful touch. This utilitarian area leads to all sections of the house – the elevator and stairway giving access to three levels, a short hallway leading to the five-car garage; and a door and stairs up to a private studio apartment. The apartment provides a secluded space for visiting family and guests. Straight ahead, beyond a convenient half bath is access to the lake by way of the lower deck. A metal flower sculpture from Akrona Gallery adds a touch of whimsy and color while overlooking two boat docks and leading to an outdoor, covered granite bar and grill at lake level.

The home's lower level pays homage to family life at the beach. A commissioned art piece from the Boston Mills Art Show leads to the game room where nine-foot-high ceilings add to the open feel. Sizeable windows overlook the lower deck and views of the lake, while colorful nautical-themed, stained-glass window hangings cast playful patterns of color. Multiple entertainment choices - a pool table, a large flat-screen TV, a game-filled closet, a handy bar and a well-appointed gym - are just some of the options here! Even lockers and showers have been installed, designed with lake-living comfort in mind.

Three nautical-themed bedrooms decorated in soothing coastal hues are also on this level. One has an ensuite bath, while the other two share a Jack-and-Jill bathroom. "Life is Good at the Beach" pillows welcome guests to stay and relax. Lakeside at Lucky Point is a seamless blend of indoor and outdoor living, designed for relaxation and enjoyment in a setting nostalgic with family memories and tranquil as the lake itself. Lakeside living ... Lucky indeed!

Three nautical-themed bedrooms decorated in soothing coastal hues are also on this level. One has an ensuite bath, while the other two share a Jack-and-Jill bathroom. "Life is Good at the Beach" pillows welcome guests to stay and relax.

Lakeside at Lucky Point is a seamless blend of indoor and outdoor living, designed for relaxation and enjoyment in a setting nostalgic with family memories and tranquil as the lake itself. Lakeside living ... Lucky indeed!




Flowers for this home provided by [Countryside Florist](#)



Countryside Florist, Inc.
Making Everyday a Celebration

4553 Broadview Rd • Richfield OH 44286
 330.659.3776 • flowers.countryside@gmail.com
www.countrysideofrichfield.com



Get great service & great rates.



Meghan MacDonald Ins Agcy Inc
 Meghan MacDonald, Agent
 756 Graham Road
 Bus: 330-929-2500
www.meghanmacdonald.net

You know I'm always here with Good Neighbor service. But I'm also here with surprisingly great rates for everyone. Call me for a quote to see how much you can save. You might be surprised.

Like a good neighbor, State Farm is there.®

Individual premiums will vary by customer. All applicants subject to State Farm® underwriting requirements.

State Farm
 Bloomington, IL
 2001875





blue / A GOODWILL® BOUTIQUE /

Visit the boutique for upscale clothing, jewelry, shoes and accessories — whether they're new with tags or just look new, you're sure to find great deals.

Good finds. Great impact. Bring good home.

blue / A GOODWILL® BOUTIQUE /
 3900 Medina Road, Suite T, Copley
 234-200-0130
goodwillakron.org/blue



Jones Group Interiors is proud to support:
46th Tour of Distinctive Homes



INTERIORS, INC.

RESIDENTIAL & COMMERCIAL DESIGN

Timeless Style...Inspired Design

Jones Group Interiors
701 S. Broadway St.
Akron, OH 44331
www.jonesgroupinteriors.com
330.253.9180

Experience Summer With Us!



TASTING ROOM

Now Open Tuesday – Saturday 3p to 9p

EVENT CENTER

Our Event Spaces are Highly Customizable

VINESTOCK CONCERT SERIES

Featuring the Best Original Music Bands in NE Ohio

Dates: June 15th, July 13th, and August 10th, 2024

No Cover Charge!

Mark Your Calendars!

primevinewinery.com

A 'Bonne' Legacy

Hidden near the entrance to the Bellaire neighborhood, a century-old stone pillar still stands, marking the entrance to a long lane that led to the original farmhouse built on this property. The farm, originally 130 acres, was established by Thomas and Edward Jones in the last half of the 19th century. Generations of the Jones family owned the farm until 1946 when Jesse Grover Bell purchased it. Jesse Bell had founded Bonne Bell Cosmetics in 1927, and named the company after his daughter, Bonne. In 1957, part of the property was sold to create the Bellaire Allotment, with the home's address changing several times as the neighborhood grew.

Stone pillars still herald the entrance, and majestic old-growth trees shade the drive to this historic property. An old-fashioned front porch is the home's inviting welcome, with the front door opening to a large foyer with dove-grey walls and a graceful staircase. Wainscoting decorates the lower walls of the foyer above dark oak hardwood flooring, while dentil crown molding here adds a classic feel.



Wooden ceiling beams and built-in oak bookshelves flank the brick fireplace in the appealing family room. A renovation by the current owner opened the firebox to the kitchen, connecting the two well-used spaces. The game table, with its overhead Tiffany-style light fixture, has a tabletop that flips to a smooth surface for board games or dining.

Upstairs, the spacious owner's suite boasts one of the three fireplaces in the home, and the unique ceiling gives an elegant ambiance to the space. The adjoining bathroom was completely remodeled after a frozen pipe necessitated major repairs. It now offers a soaking tub and a luxurious glass-enclosed steam shower, both with intricate tilework in earth tones, in addition to the two vanities and a walk-in closet with built-ins.



The formal living room and the owners' bedroom suite above it were a 1954 addition to the original century home. In 1987, age and deterioration forced the removal of the old farmhouse. The rest of the present-day home was built where the century home had been.

The living room is a gloriously sunny room with a comfortable seating area and a wet bar nearby for entertaining. The stately fireplace surround showcases a woodburning fireplace. Above it is a Bev Doolittle print, "The Forest Has Eyes," hiding the faces of 18 Native Americans through the "camouflage technique" of the artist. Almost dwarfed in a room this size, an elegant pool table overlooks a tantalizing view of the outdoor kitchen, just one taste of the many outside amenities.

A step up leads to the formal dining room, where the oak floor from the foyer is reprised beneath a graceful dining set and a cabinet filled with sparkling crystal.

The formal living



A large bay window offers views of the expansive outdoor living spaces, including one of the oldest and largest weeping beech trees in Ohio.

The heart of this home is truly the kitchen and eating area, completely remodeled by this homeowner with high-end appliances and amenities reflecting his love of cooking and entertaining. A bay window matching the one in the dining room lets natural light stream in over the deep double sink, two-drawer Fisher Paykel dishwasher, granite countertops and hardwood island with a glass door cabinet. When the firebox from the family room was opened up to become a see-through, a rustic stone surround was added on the kitchen side.



Patio doors lead to a paradise of outdoor living with expansive patios, multi-level decks, an in-ground pool, and a full outdoor kitchen. But all are mere prelude to the showpiece attraction on the property – the barn!

Built around 1880, this 4,000 square foot, three-level bank barn has been completely reimagined by the owner through extensive repairs and upgrades. The stone foundation and outside siding are original, although the foundation was reinforced by a previous homeowner.

If the main barn doors, replaced by a glass door and windows, are a surprise, the dramatic interior makeover is astounding! Natural light streams in through a two-story wall of windows, illuminating the phenomenal transformation of the space. Saving as many of the original barn beams and interior walls as possible, the owner personally selected the remaining wood needed – mostly pine – from a lumberyard in Montana. The effect is a wood lovers' Utopia, thanks to the natural beauty of the wood, the woodworking skill of Amish craftsmen and the vision of the current owner!

Entertainment reigns supreme here, with a stage lit by Edison lightbulb fixtures, a large-screen TV, and room for guests galore. Heavy accordion-style doors, formerly stall doors at Thistledown Racetrack, open to the adjoining space with a game table, sitting area and large bar, its stunning top created from walnut salvaged from Mohican State Park, noted by the commemorative medallion embedded in the corner.



Every working barn had a hayloft, and this one has been transformed into a full apartment, thanks to a system of beams and cables designed for stability by Amish craftsmen during the renovation. Now the loft includes a fully equipped kitchen and eating area, a living space with pullout sofa, a table on wheels that rolls out of the way, and a full bathroom. There is even a trap door that was cut into the floor to move the furniture into the loft. Windows removed from the barn's lower level were repurposed here for a bird's eye view of the main room below.



The barn's lower level is accessible from stairways on either end of the main floor and offers even more surprises! There's a screened-in room for cigar smoking – a bit of an oxymoron in a barn – a game area with original barn beams supporting the floor above; a tool shop; and a state-of-the-art woodworking shop, complete with a vacuum system! There is even a spacious patio, complete with a towering stone fireplace and retaining wall, overlooking the property's 14 acres, including a newly planted orchard on the far reaches of the property.



Tradition and entertaining ...farming and family ... history abounds in and around A "Bonne" Legacy!

Flowers for this home provided by **Countryside Florist**

Savoir-Faire

(\sav-,wair-'fer\n. the ability to act appropriately in any situation)

EVENT PLANNING

Winnie Leenaarts AIFD
330-819-2369 after hours
winntenn@aol.com
www.sfevents.net

2309 West Market Street
Pilgrim Square
Akron, OH 44313
330-835-9055



Proud to Sponsor the BVS Home Tour

These homes are magnificent. When you're ready to find your worry-free home in retirement, make sure you compare Concordia.

Our continuum of care is thoughtfully designed to help you or a loved one age in place, with retirement living villas and apartments, assisted living, short-term rehabilitation and long-term nursing care. Call us today at 330-664-1289 to learn more or schedule a private tour.

www.ConcordiaAtSumner.org

970 Sumner Parkway • Copley, OH 44321 • 330-664-1000

Blooming Designs

Specializing in the design, installation, and maintenance of flowering gardens

330-848-2203

www.summit-landscape.com

 [bloomingdesigns_akronohio](https://www.instagram.com/bloomingdesigns_akronohio)

 Blooming Designs, Akron Ohio



opening **SPRING 2025**

395 SPRINGSIDE DRIVE, BATH TOWNSHIP

Petitti Garden Centers is *thrilled* to announce its 10th location will open next year in the community of Bath Township!



*locally grown
& family owned*
SINCE 1971

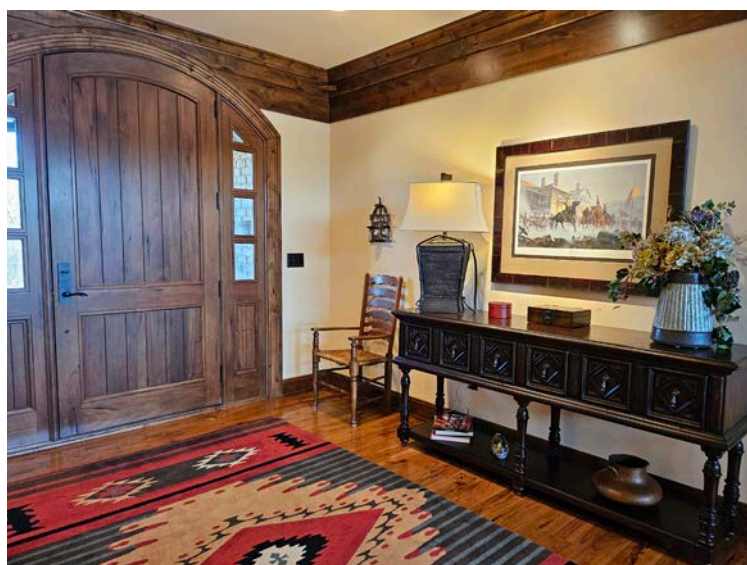
SCAN FOR
DETAILS



Rustic Hammonds

This uniquely designed home on five beautifully landscaped acres was built in 2011 following a year of collaborative efforts between the homeowner and his interior designer. The result is a respect for the past and an appreciation for the natural beauty of the site. Situated on a picturesque lake, the house and outbuilding evoke a sense of the American West.

An inviting ambiance greets all, thanks to the rich wood tones, depth of colors, and displays of treasured memorabilia. A Southwestern tribal rug in the foyer welcomes with the warmth of vibrant colors. Furniture pieces and artwork of the National Parks and the Civil War

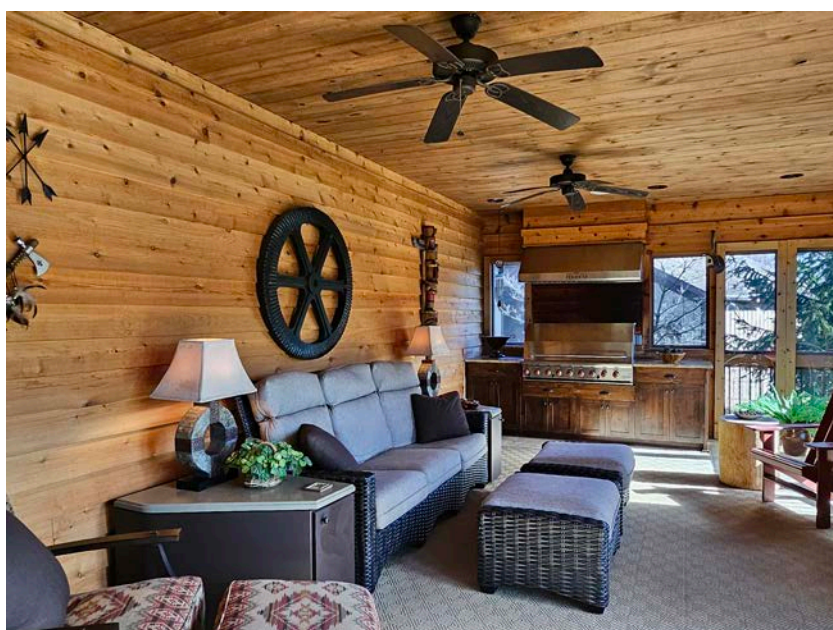


heighten a lodge-like western feel. Rich alder wood, used in the archway and as ceiling beams throughout the home, draws one's attention beyond the foyer and into the two-story family room with its wall of windows framing the bucolic lake setting.

Western-themed photography guides the way to the homeowner's office. A wall of bookshelves flanks the desk, which complements the custom-designed ledge above that displays collectibles. The richness of the woodwork and the impeccable craftsmanship add to the tasteful impact of this cozy space. The powder room boasts a honed stone countertop, a vessel sink, and prints of wildlife and Yosemite. The sconces do double duty – providing light and a “hangout” for hand towels!

Just outside the kitchen is a butler's pantry, distinctive for its detailed cabinetry, and complete with a built-in beer tap and ample storage for easy entertaining. Copper and wood are hallmarks of this stunning kitchen, particularly with the island's copper countertop, the workmanship of the cabinetry, and the wood cornice framing the ceiling. The beautifully tooled design of the copper fan hood above the six-burner stovetop is enhanced by the inlaid tile of the backsplash. The tile, in turn, complements the earth-toned granite countertops and rich hickory flooring. Plenty of counter space, along with bar seating, make this kitchen a gathering area, especially with the built-in automatic coffee maker (a requirement of the homeowner!) and a handy counter-mounted corkscrew. Exquisite detail in the

woodwork adds a dramatic design element to the custom corbels under the counter and throughout the home.



While planning this home, the homeowner chose not to include a formal dining room. Instead, the space here was used to center a table from a previous home, add chairs and a beautiful bench seat, and position all in front of the windows with views of the lake and the outdoors beyond.

The lodge-like feel continues on the comfy porch with its knotty pine paneling, floor-to-ceiling screens, masonry fireplace, and tile flooring with an earth-toned area rug. The built-in barbecue offers grilling options no matter the weather, while the rustic accessories, including tomahawk and totem pole inspired wall art, are softened by the sophistication of Aztec-inspired upholstery.

While the backdrop along this part of the home is the serenity of the outdoors, it's the comfort and memorabilia in the great room that provide the home's most

exceptional atmosphere. The room's two-story beamed ceiling soars above a custom-designed ledge above the windows, displaying ceramic artifacts and a vintage schooner, representative of the homeowner's love of historic gems. The larger-than-life totems, found by the homeowner's interior designer in Tucson, Arizona, add a breathtaking component here, along with lighting that brings those faces to life! The stone, custom-designed fireplace – one of four in the home –



stands out with its wooden mantel and stone hearth, while a prized collection of Civil War collectibles fills one wall. And who knew a horse's martingale could be a piece of hanging art? But what makes this room unique is the full-sized canoe, dramatically hanging high above and secured by custom brackets designed specifically for this installation. The seat webbing and intricate wood carvings, all original to the canoe, were crafted by Indians in Canada.

The upper patio, with its expansive view of the lake and yard, is protected from inclement weather by the curved wooden roof, a nearly seamless extension of the great room ceiling. The decking along the house wraps around to the primary bedroom, making a trip to the hot tub below enticingly convenient.

A large bay window-shaped space provides entrance from the deck to the primary bedroom, with its rustic yet tranquil feel. The showpiece here is a custom-made wainscoting wall which mimics the siding of the exterior of the home, becoming an eye-catching background for the



two-poster bed with wood-paneled headboard. The primary bath features taller-than-standard height countertops of a honed granite stone with natural fissures, a beautifully designed shower, and a separate water closet with its own sink. Custom wood moldings, and doors with distinctive wood cornices overhead, add another level of warmth and richness to this space.

A Yosemite National Park print inhabits the landing to the lower level where a foyer-like space with a wine wall and expansive storage awaits. Ceiling beams enhance the spaciousness of the main room where the seating area beckons guests to take advantage of the fireplace. Designed by the homeowner and interior designer, the stone façade of the fireplace discretely houses the television's sound bar beneath the barn-beam mantel – a beam so heavy it took eight men to lift it into place! The well-equipped bar area, with seating for six, is enhanced by corbels beneath the bar top and additional storage at the endcap of the bar, unique yet functional extras. National Park prints continue the lodge-like feel of the space where the wall of windows frames outside views!

En suite guest rooms were designed at both ends of the lower level. One room welcomes with seating at a bay window. The bathroom vanity countertop meshes well with the floor tile palette and wooden ceiling. But the showstopper is a recent Christmas present – the fabulous copper tub fronted by a cedar wall! A bit more rustic, the second guest suite invites with bold colors, warm designs, and custom touches in the window treatments.

A workout area rounds out the lower level with a pool table, exercise equipment and tributes to family members' athletic abilities. Patio areas on this lower outdoor level include another grill and fireplace, encouraging camaraderie with family and friends close to the nearby lake.

Mere steps away is the outbuilding/barn that houses landscape equipment, a boat, and a pair of jet skis for summer fun. This building was also decked out as the site of the homeowners' wedding reception for a party like no other, at a home like no other, the extraordinary Rustic Hammonds!



Flowers for this home provided by [Savoir-Faire](#)



REILLYS ORIGINALS

DESIGNS A LITTLE *OUTSIDE OF THE BOX*

Unique and exquisitely memorable floral artistry for over thirty years.

Lori Reilly works throughout the NE Ohio region, assisting clients in expressing their emotions through floral & interior space design.



reillysoriginals@neo.rr.com | 330.620.0412

Virtual Home Tour narration

provided by **Sue Wilson**

Founder of Sue Wilson Creative and Internet Radio Station The Acoustic Escape



Voice Over. Writing. Content Creation.
330-808-0818

<http://www.suewilsoncreative.com>

Andrew Starr

STARR FILMS

videographer for the
46th Tour
of Distinctive Homes



Blur the Lines. Free the Music.

www.theacousticescape.com

Laura Horning Duryea

Proud BVS Member and
Bath Resident

☎ 330.606.7131

✉ lauraHduryea@gmail.com



BERKSHIRE HATHAWAY
HomeServices
Stouffer Realty

Stately Georgian Revival

The grace and symmetry of this home are an ideal match for the manicured settings of both the yard and the overlook. The porch, surrounded by beds of large Hostas, a Kousa dogwood tree, and accessed by stacked stone steps from the driveway, softens the welcome. With its twin chimney stacks and arched window over the Tricorn Black front door, this stately home is an excellent example of famed local architect Roy Firestone's classic work. Historic 8-over-12 paned windows with sandstone "keystones" above punctuate the intricate brickwork on the front façade.



The entry beckons with a beautiful floor of unique Pewabic tile leading to a larger foyer. Tile from the Pewabic

Pottery Co. in Detroit, Michigan is known for its quality and iridescent glaze. The name, taken from an Ojibwa/ Chippewa word meaning "metal," comes from the Pewabic Copper Mine in the Upper Peninsula of Michigan. The inner foyer, along with other areas throughout the home, is distinctive for its original wood flooring, now beautifully refinished. Timeless crystal chandeliers highlight the sophisticated, silver-gray striped wallpaper. A latticed radiator cover at the entry provides a handy drop spot for necessary items, while the oriental carpet runner on the main staircase adds a touch of elegant ambiance. Featuring a walnut Georgian banister, the stairs provide access to the home's four bedrooms, while the graceful quarter circle upper foyer offers a grand view through the arched window with unique flower-shaped panes.

The original lead-and-glass paned door, painted black to match the front door, frames the arched entrance into a snug den. With sage green wallpaper and comfortable furniture, along with another arched window – a match to both the den door and front center window – the room invites. It's just the place to enjoy views of the back garden, a night of TV watching, or a good book, perhaps chosen from the

built-in, arched bookcases beside the door.

Serenity is the mood in the living room where the blue and white color palette is complemented by the ginger jar décor. The original fireplace with an Italian green marble surround anchors a seating area made for good company and relaxed conversations. The soft beige walls highlight treasured artworks in the owner's collection, including a sweeping landscape above the Georgian mantel. An antique secretary provides space for work or letter writing, although the tempting views beyond the windows may preclude much work being accomplished. The single French door leading out to the deck and back garden is framed by the gorgeous highboy secretary and a Steinway piano, a beloved gift from husband to wife.



Another arched doorway leads to a dining room in dark blue and coral. Front windows frame the home's majestic view while a side door leads to the charming front porch where

brick arches, a feature repeated often in this home, abound. Paneled wainscoting matching that in the living room, an antique sideboard with a whimsical running horse, and a grandfather clock are highlights, but it's the trestle table, with upholstered chairs around, that is the star of the room.

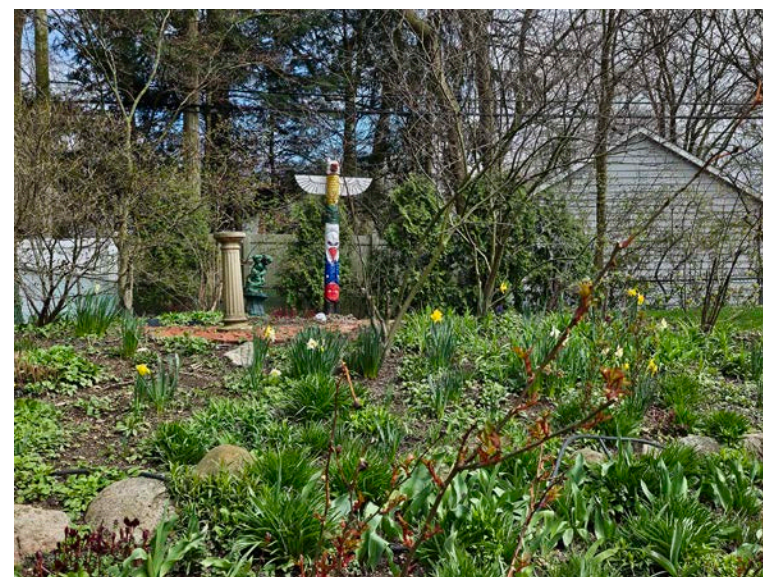
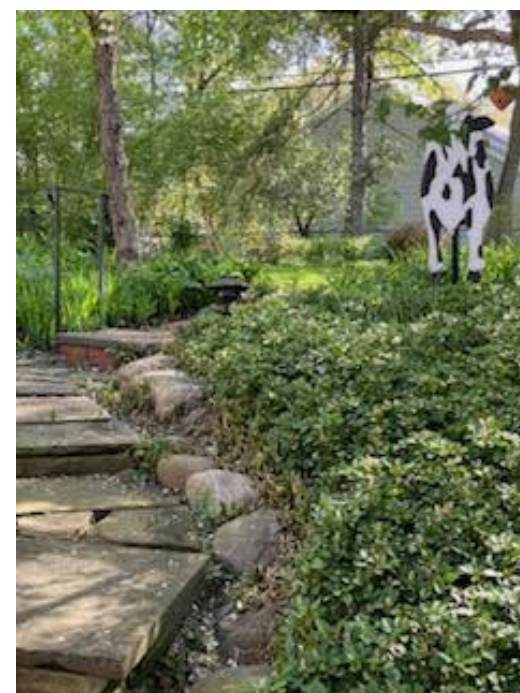
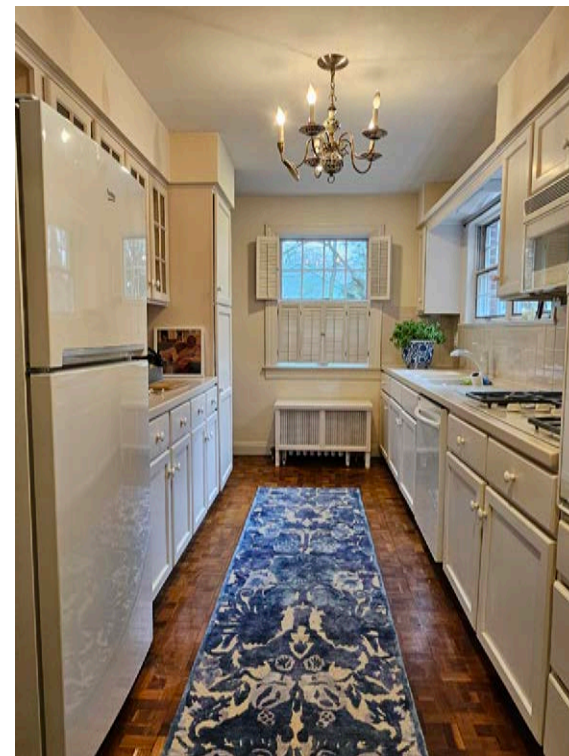
The breakfast room, another typical Roy-Firestone feature, is now a home office with an antique barley twist desk, a storage sideboard and the best view of the front garden where winged visitors to bird feeders in the garden beds are welcomed entertainment. A mail slot, located on the front porch and still used by the mail carrier, can be seen here as well. Cheery artwork presides over this small but prized space featuring a black walnut parquet wood floor of varied patterns and hues that continues into the kitchen.

The all-white galley kitchen is the hub of life for this home. A cloisonné chandelier and latticed radiator bench provide century cottage charm while the room itself gives access to every area of the home. Kitchen collectibles peek out from glass-paned cabinet doors, while the window over the sink

and work area provides a view of the deck and the native shade plants surrounding it. The far end of the kitchen has a true Williamsburg garden window showcasing the back landscaping, and full shutters for privacy when desired. Doorways lead to the rest of the home, including what had been the servant stairs to the upper floor, and a unique screen door and lovely back door with stained glass insert leading to the back garden. Harking back to simpler times is the milk delivery window - still used today for leaving other deliveries or small joys!

Featured on a recent Summit County Master Gardeners tour, the home's backyard garden provides outdoor wonder all year long. Stone and brick pathways lead to intriguing spaces as they meander through the levels and garden beds, while the rock garden is enhanced with a variety of flowering perennials for added color. In addition to the glorious plantings, highlights include a totem pole, a sundial, and a garden room in the middle of this oasis, the site some years ago for a wedding! A cottage shed, with flower-filled window box and a unique view of a garden cow, provides storage and whimsy. A gooseberry bush towards the back as well as unusual Monkshood, blooming later in the year with bright purple flowers, add distinction to this area. A deck, also accessed from the living room door, has built-in benches for seating, while ancient gnarled honeysuckle trees along the path from the shed provide visual interest and attract a menagerie of wildlife.

Enjoying the grandeur of this classic home, wandering through the masterfully landscaped gardens, or contemplating a sunset framed by twin brick arches from the porch, everything is a pleasure when experienced at this Stately Georgian Revival.



Flowers for this home provided by [Reilly's Originals](#)

Congratulations on the 46th Tour of Distinctive Homes in Bath!



**YOUR SPRING
MARKET EXPERT**

**ALISON BARANEK
330-289-5444**



**BERKSHIRE
HATHAWAY** | **Stouffer
Realty**
HomeServices

🏠 A member of the franchise system of BHH Affiliates, LLC



SAND RUN PHARMACY

We're All About Your Health

40 Sand Run Rd. Akron, OH 44313

330-864-2138

www.sandruncharmacy.com

Savoir-Faire
(\sav-,wär-'fer\ n. the ability to act appropriately in any situation)

EVENT PLANNING

Winnie Leenaarts AIFD
330-819-2369 after hours
wintenn@aol.com
www.sfevents.net

2309 West Market Street
Pilgrim Square
Akron, OH 44313
330-835-9055

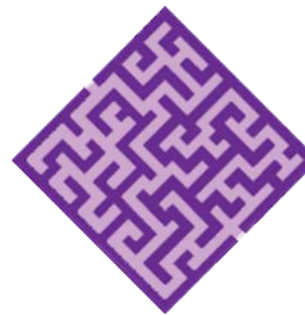


Sharon Honroth

Licensed and Certified Agent

c: 330-608-1171

shonroth@medicareplansneo.com



KAZ Company

Ask Us About the Maze[®]

A FEDELI GROUP COMPANY 

Medicare Health Plans

4807 Rockside Road, Suite 660
Independence, Ohio 44131
p: 216-901-9300 | f: 216-901-9400

Medicare Supplements



Medicare Advantage & Part D Plans

www.medicareplansneo.com

We do not offer every plan available in your area. Any information we provide is limited to those plans we do offer in your area. Please contact Medicare.gov or 1-800-MEDICARE to get information on all of your options.

WISHGARDEN



Wishgarden Is A Lively Roots-rock Band That Applies Its Upbeat Groove To Cover And Original Tunes.

UPCOMING PERFORMANCES

Friday, May. 31, 7:00 PM
Band/"Rock the Lock"
at Lock 3,
Akron, OH

Saturday, June 15, 6:00 – 7:30 PM
Band/Sharon Showcase
Sharon Center

Friday, June 28, 6:00 – 8:00 PM
**Duo/North Water
Brewing Co.,**
101 Crain Ave, Kent, OH 44240

Friday, July 12, 6:00 – 8:30 PM
Duo/Prime Vine Winery
4332 Manchester Rd
New Franklin, OH

Thursday, July 18, 6:30 – 8:30 PM
**Band/Tallmadge Summer
Concert Series,**
Tallmadge Circle,
Tallmadge, OH

Friday, July 19, 7:30 – 10:30 PM
Duo/Medina Brewing
320 S Court St G9
Medina, OH 44256

Saturday, July 27, 7:00 – 9:00 PM
Duo/Hop Tree Brewing
1297 Hudson Gate D
Hudson, OH 44236

Sunday, Aug. 4, 6:00 – 8:00 PM
**Band/Summer Concerts
on the Green**
on the Village Green at the corner
of W. Streetsboro Rd & Broadview
Rd., Village of Richfield, OH

Friday, Aug. 16, 6:00 – 8:30 PM
Duo/Prime Vine Winery
4332 Manchester Rd
New Franklin, OH

Saturday, Aug. 17
**Band/Private House
Concert**
Cleveland Heights, OH

Friday, Aug. 23, 8:30 – 11:00 PM
Band/Mustard Seed Cafe
867 W Market St, Akron, OH

Friday, Aug. 30, 7:00 – 10:00 PM
Band/1899 Indoor Golf
3094 Glenwood Blvd
Twinsburg, OH 44087

Saturday, Sep. 7,
Band/Private Event
Madison Lakehouse

Saturday, Sep. 28, 7:00 – 10:00 PM
**Duo/Regency Wine
Sellers**
115 Ghent Rd, Fairlawn, OH

Saturday, Oct. 5, 7:00 – 10:00 PM
Band/Brighten Brewing
1374 S Cleve-Mass Rd
Copley, OH

Saturday, Oct. 12, 7:00 – 9:00 PM
Duo/Hop Tree Brewing
1297 Hudson Gate Dr
Hudson, OH 44236

Friday, Oct. 26, 7:00 – 10:00 PM
Duo/1899 Indoor Golf
3094 Glenwood Blvd
Twinsburg, OH 44087

Friday, Nov. 1, 8:30 – 11:00 PM
Band/Mustard Seed Cafe
867 W Market St, Akron, OH

Saturday, Nov. 23, 7:00 – 10:00 PM
**Duo/Regency Wine
Sellers**
115 Ghent Rd, Fairlawn, OH

Saturday, Dec. 7, 8:00 – 11:00 PM
Band/Jilly's Music Room
111 North Main Street, Akron, OH

**For House Concerts
and Private Parties,
contact Tony at
wishgarden@gmail.com**

FOLLOW WISHGARDEN ON INSTAGRAM & FACEBOOK · STREAM OUR MUSIC ON SPOTIFY, APPLE MUSIC AND ALL MAJOR STREAMING SERVICES



*Congratulations to
Bath Volunteers for Service
on the 46th Tour of Distinctive Homes!*

*Proud to be a member of this
amazing group of people!*

kw CHERVENIC
KELLERWILLIAMS. REALTY



**Experience and Trust
Together, we'll achieve your
Real Estate goals!**

The Laurie Morgan Schrank Team

**Call | Text : (330) 807-3320
Email: Laurieschrank@kw.com**



**AMHA is proud to support
46th Tour of Distinctive Homes!**

AMHA Board of Directors

Herman L. Hill,
Executive Director

Marco S. Sommerville, *Chair*

Roberta E. Aber, *Vice Chair*

John C. Fickes

Thomas L. Harnden

Grace D. Hudson

**STEVEN W. MOORE
BUILDING CORP. LTD.**



**(330) 668-6892 • steve.swmoore@gmail.com
www.stevenmoorecustomhomes.com**

Highest Quality Homes, Inspired by YOU.



OCELOT

CAFE • & • BAKERY

4174 Wheatley Rd. • Richfield OH, 44286

M-F: 7-2pm • Sat: 8-1pm • Sun: Closed




*Fabulous flowers
for all occasions!*

1960 W. Market St. | Akron, OH 44313

phone: 330-867-3318

Visit us on Facebook and Instagram!

 @pink_petals_florist

 @pinkpetalsfloristshop

*We are delighted to help support
the Bath Volunteers for Service
Tour of Distinctive Homes.*

*The BUS organization continues to make
a meaningful impact by helping to meet
the needs within the community,
and we are very proud to support their efforts.*

Jim and Cheryl Nilsen



**Best Wishes for the 46th Annual
Tour of Distinctive Homes!**

Diane Eichler | 330-524-3025
Maureen Todaro | 330-618-9872
Sue Bauer | 330-697-3631




Anne Skoblar
330-687-2070



Candace Gatewood
330-289-1604



Marilyn Latine
330-802-8886



Jean Farinnaci
330-603-2444



Helen Gisewhite
330-289-2823

Have a real estate question?



Howard Hanna
has the answer.™

Real Estate Services



Emily Levitt
Office Manager

Howard Hanna Akron | 330-836-9300 | 3030 W Market St, Akron, OH 44333 🏠




Katie Fenwick
330-697-1316




**Julie
Cantley**
330-352-9514



Noula Kountis
330-328-1374



**WISHING YOU A SUCCESSFUL TOUR OF
BATH DISTINCTIVE HOMES!**

Deborah Ryan Bishop - Realtor® (440) 478-3099
DeborahBishop.HowardHanna.com

Michele Lux
330-697-0204

Howard Hanna
Mortgage Services
#LO.005803.00, NMLS#101561



Nick Gorant
419-308-4403



Saundra Carter
330-472-4406



**Deb
Zarconi**
330-338-3383



*The Key To
Your Next Home!*

Beth Rodgers | 330-607-3987



Samantha Russell
513-349-0704



Juanae & Matthew Carter
330-338-7842 | 330-957-6772



*Best wishes for another
successful tour!*

Shannon Raimondo & Beth Dearth
216-849-0946 | 310-890-0442



Michael Latine
330-802-6459

**THANKING YOU FOR 46 YEARS
OF HIGHLIGHTING
BATH'S DISTINCTIVE HOMES!**




Jenny Frantz
330.320.7229
JennyFrantz@HowardHanna.com



Julie Boyle
330.730.6290
JulieBoyle@HowardHanna.com



Ji
JENNY & JULIE
FRANTZ BOYLE GROUP
JENNYANDJULIE.COM



Val Murphy
330-671-1414



Sally King
330-803-4364


Hoff & LeighTM


Jennifer Fernandez
CCIM, SIOR

*Specializing in
Commercial Real Estate
for 25 years.*



330-573-5933
jfernandez@hoffleigh.com



We Have The Power To Make Things Better

**Licensed Electrical Contractor #37155,
General Contractor, Handyman**

**Residential & Commercial Electrical Work,
Home Additions, Bathroom & Kitchen Remodels
Home Repairs, Carpentry**

See our work on facebook

michaelsworkshop.com 330-256-5432

*Thank You for Supporting
The Bath Home Tour
and
Bath Volunteers for Service*



Thomas & Lisa Mandel





ALL ARE WELCOME HERE!



- * Join us for Worship on Sundays!
- * Join or enjoy our vibrant music ministry!
- * Be a part of our engaged community service ministry!
- * Engage in our active youth and family ministry!
- * Enjoy a Music at Bath concert!



The Bath Church

 UNITED CHURCH OF CHRIST
An Open and Affirming Congregation

3980 W. BATH RD AKRON 44333
330.666.3520 WWW.BATHUCC.ORG



MUSIC AT BATH
CONCERT SERIES

BATH VOLUNTEERS FOR SERVICE

Serving the Community Since 1958

... helping students

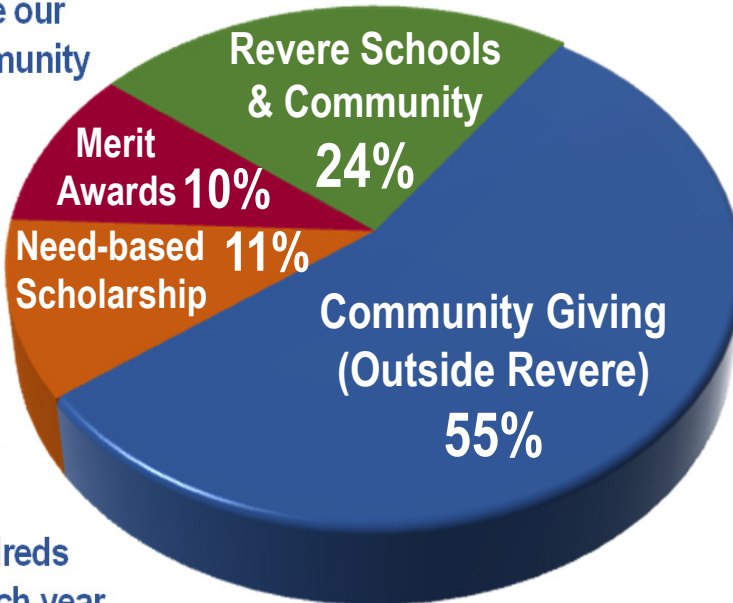
BVS provides one four year needs-based scholarship to a Revere student. In addition, \$1000 merit-based scholarships for volunteerism are awarded to students living in the Revere school district.



... in the community

The proceeds from our events allow BVS to continue our long tradition of community and scholar support. Much of our giving, which totals over \$30,000 annually, is directed toward organizations helping women, children and families in the greater Summit County area. We also provide hundreds of volunteer hours each year to our community partners.

BVS Giving at a Glance



... having fun!!

From monthly movie days to fun outings and meet-ups, BVS has something for women of all ages and all stages!



Interested in joining? We'd love to welcome you!

BVS is open to all women living in and around the Revere School District. See our website for membership information.

www.bathvolunteersforservice.com

Save the Date!

80th Annual BATH HORSE SHOW



80th Annual Bath Horse Show / Mini-Trial

Dressage • Show Jumping • Cross Country

Saturday, Aug. 10, 10 a.m.-3 p.m.

Sunday, Aug. 11, 8 a.m.-4 p.m.

Bath Pony Club at Allardale Park
141 Remsen Road, Medina

• Concessions
• Displays



Visit www.bathvolunteersforservice.com for ticket/sponsorship information



presents the

7th



Friday
November 8
2024

Save the Date!

TRIVIA & TACOS

Watch for details soon!


For tickets and information, go to www.bathvolunteersforservice.com

sponsored Blood Drives
held at Bath United Church of Christ



American
Red Cross

November & March



**Thank you for supporting the mission
of Bath Volunteers for Service.
Your generosity helped make
our virtual tour a success
and will benefit
many children and adults
in the greater Akron community.**

- *THE BVS HOME TOUR COMMITTEE*